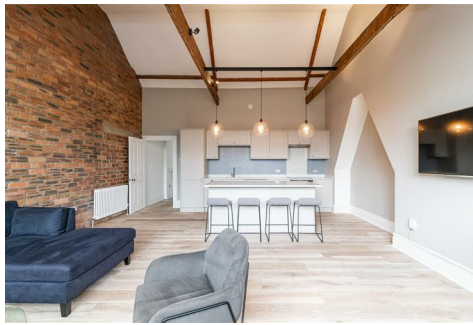




HIVE ESTATES



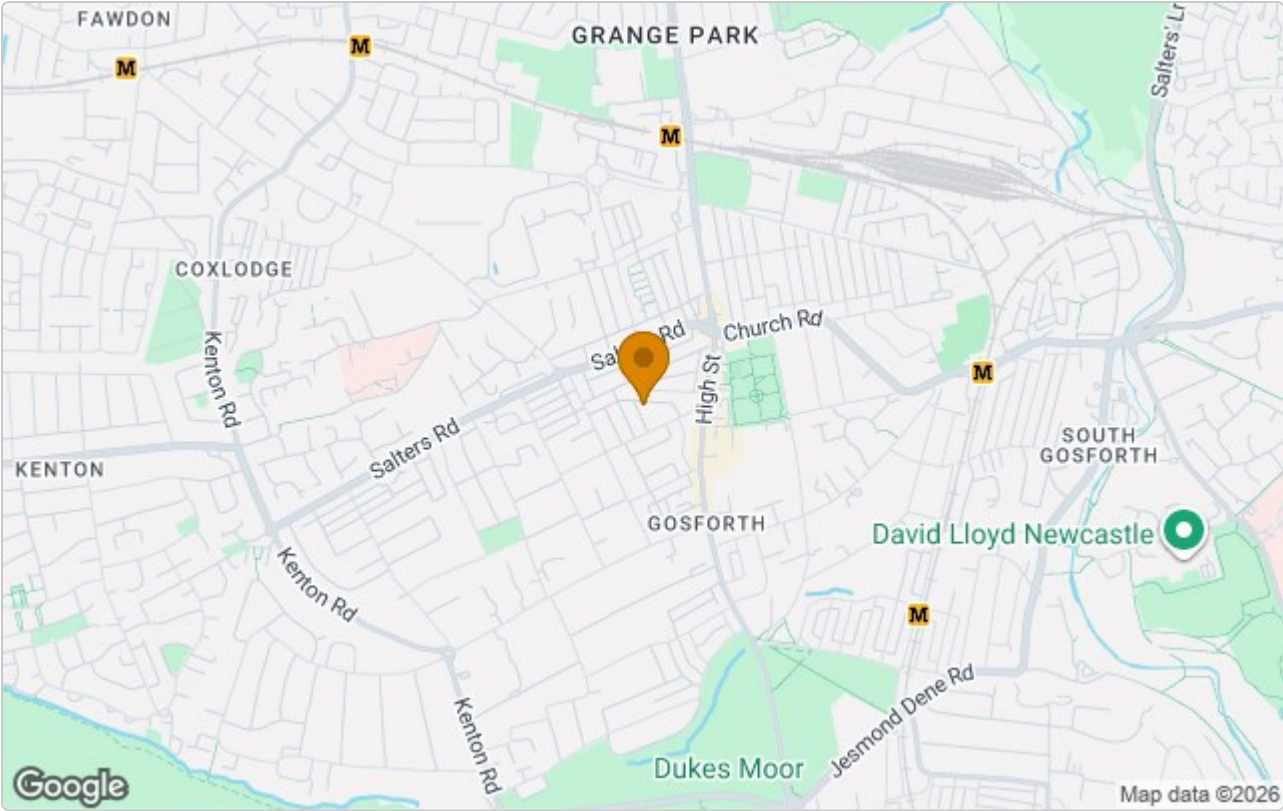
20 West Avenue, Newcastle Upon Tyne, NE3 4ES

£1,900 PCM

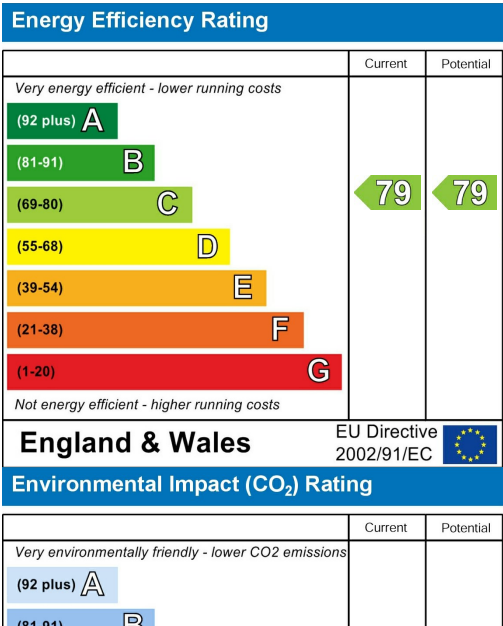
Available February 2026 | £1,900 per month | Hive Estates welcomes to the market this luxury 2 bedroom penthouse apartment. Located in central Gosforth, this stunning property will suit professionals wanting quality, private living with easy access to local shops, bars and restaurants. Situated within walking distance of Gosforth High Street, with plenty of on street parking and surrounded by residential homes. Spacious and contemporary throughout, the apartment is on the top floor and features high ceilings and plenty of windows which fill the space with natural light. Original period features adorn this property, with exposed brickwork and beams, feature radiators and stunning plasterwork, coving and woodwork throughout. There is a high specification open-plan kitchen with breakfast bar, integrated appliances, marble worktops and feature pendant lights. There are two double bedrooms, the master boasting an en-suite, and the second bathroom fitted with a bath and separate shower. There's solid wood flooring in the living areas, with luxury thick carpet in the bedrooms and double glazing. Finished and decorated to a very high standard throughout, the property is available on a furnished basis.



Area Map



Energy Efficiency Graph



These particulars, whilst believed to be accurate are set out as a general outline only for guidance and do not constitute any part of an offer or contract. Intending purchasers should not rely on them as statements of representation of fact, but must satisfy themselves by inspection or otherwise as to their accuracy. No person in this firms employment has the authority to make or give any representation or warranty in respect of the property.